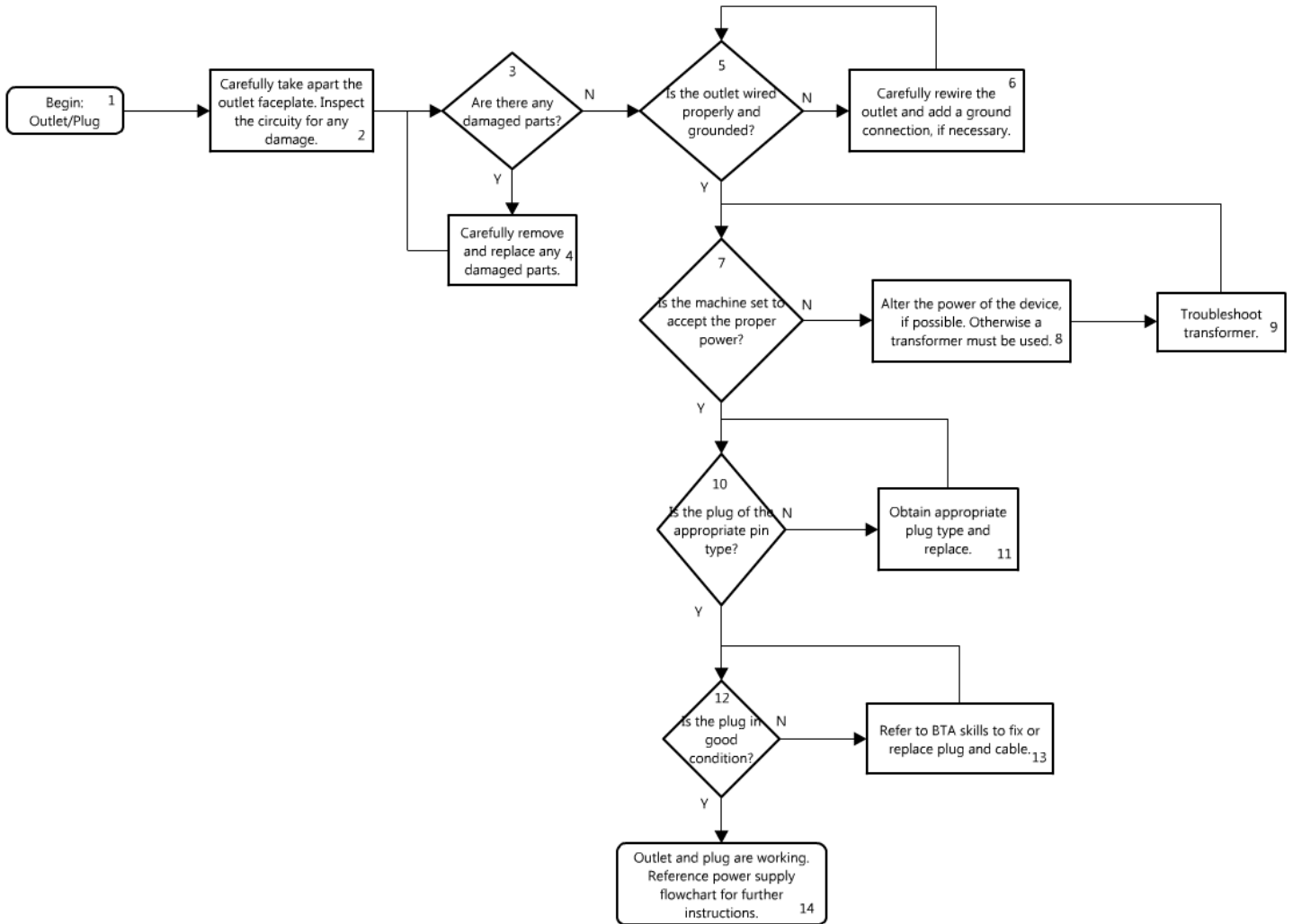


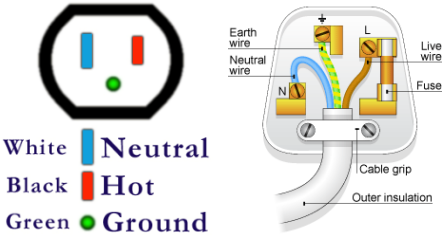
Power Supply (Outlet Plug) Repair and Troubleshooting

Flowchart



Warning: Handling Electrical Equipment is dangerous. Please wear insulated gloves and use insulated equipment whenever handling high voltage outputs.

Description

#	Text Box	Comments
1	Begin: Outlet/Plug	Begin diagnostic process for a work order on Outlet/Plug. Testing and maintenance is advised when a device that uses a wall input fails to turn on.
2	Carefully take apart the outlet faceplate. Inspect the circuitry for any damage.	Using BTA skills for Power Supply, <u>carefully</u> take off the outlet faceplate. Disconnecting the main power while dismantling is advised.
3	Are there any damaged parts?	Inspect components. Is anything disconnected? Is anything clearly burned or melted?
4	Carefully remove and replace any damaged parts.	Remove, replace, or reconnect any non-functioning parts.
5	Is the outlet wired properly and grounded?	<p>Using BTA guidelines, use a voltmeter to check for the output voltage and current. Are the live, neutral, and ground wires appropriate? What about in the device plug?</p>  <p>White Neutral Black Hot Green Ground</p>
6	Carefully rewire the outlet and add a ground connection, if necessary.	Use BTA skills to <u>carefully</u> rewire anything improperly wired. Disconnect the main power!
7	Is the machine set to accept the proper power?	Check the machine specifications. Does the device accept the appropriate wall power?
8	Alter the power of the device if possible; otherwise use transformer	Some devices allow the input power to be altered. Otherwise obtain the transformer of the appropriate input and output voltages.
9	Troubleshoot transformer.	See the transformer troubleshooting flowchart to ensure the new transformer is working properly.
10	Is the plug of the appropriate pin type?	Does the plug pin configuration fit into the wall socket?
11	Obtain appropriate plug type and replace.	Obtain a replacement and utilize BTA skills to replace. Otherwise obtain a pin type adapter. Just ensure the machine is of the appropriate power, as pin type is indicative of power accepted.

12	Is the plug in good condition?	Pins shouldn't wiggle, be bent or rusted.
13	Refer to BTA skills to fix or replace plug and cable.	Tighten pins that wiggle. Straighten any bent pins with pliers. Remove any rust with sandpaper.
14	Outlet and plug are working. Reference power supply flowchart for further instructions.	Move on to the next step of the power supply flowchart if device still does not turn on. Always check with clinician before putting a piece of equipment back into use.