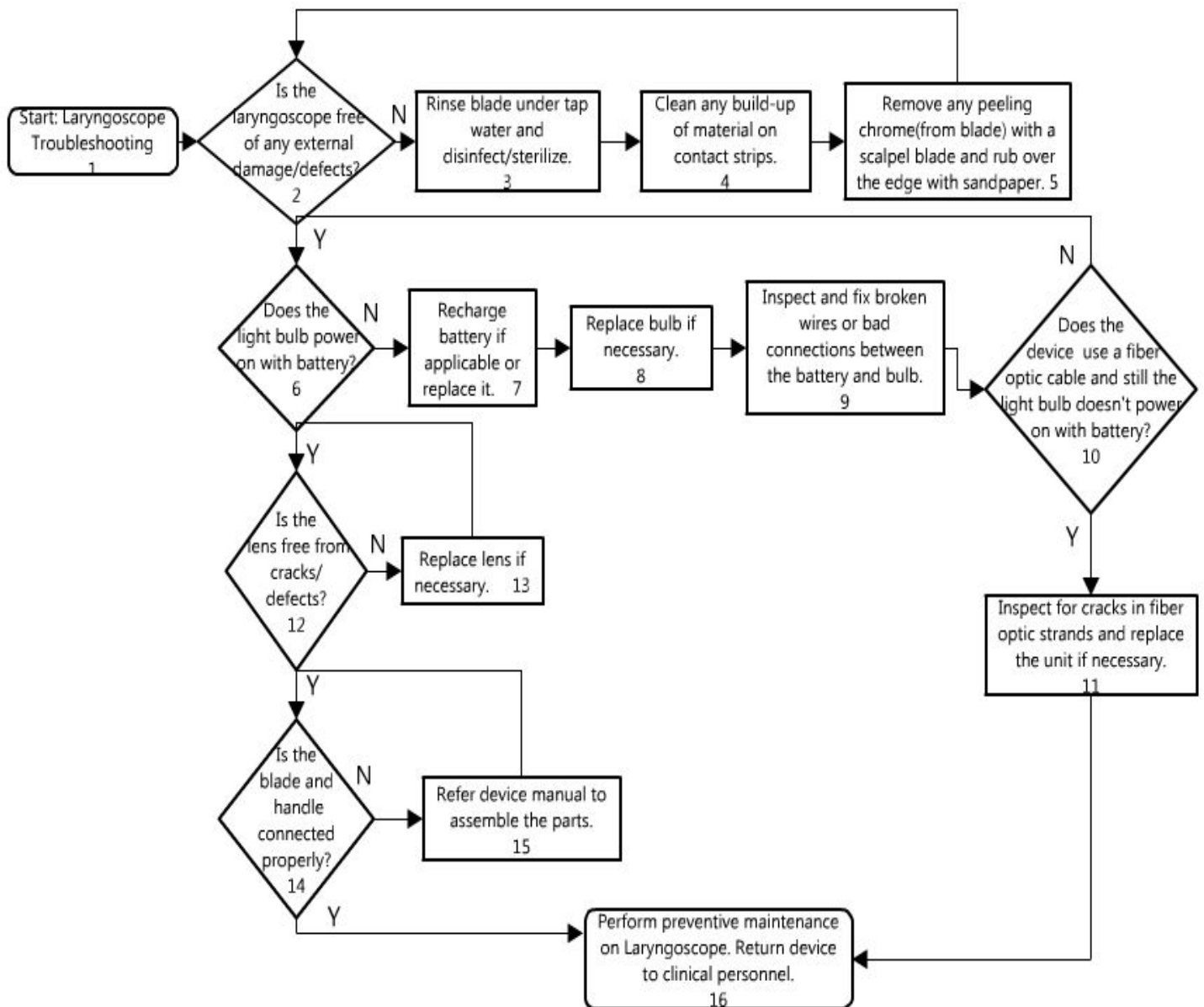


EQUIPMENT

Laryngoscope Troubleshooting

Laryngoscope

Flowchart



Description

#	Text Box	Comments
1	Start: Laryngoscope Troubleshooting	Begin diagnostic process for a work order for Laryngoscope.
2	Is the laryngoscope free of any external damage/defects?	Inspect laryngoscope for external cracks, damage, or dirt.
3	Rinse blade under tap water and disinfect/sterilize.	Clean and dry the blade.
4	Clean any build-up of material on contact strips.	Examine the contact strips (blade-handle interface) of laryngoscope for dirt.
5	Remove any peeling chrome (from blade) with a scalpel blade and rub over the edge with sandpaper.	Examine the blade for any peeling chrome and remove peels with care. Ensure that there is no damage to the blade during the removal process.
6	Does the light bulb power on with battery?	Power on the device with battery. Examine whether light bulb gives sufficient illumination.
7	Recharge battery if applicable or replace it.	Refer BTA skill set on Batteries to identify and replace damaged batteries.
8	Replace bulb if necessary.	Refer BTA skill set on Lighting/Indicators to replace non-functional light bulbs.
9	Inspect and fix broken wires or bad connections between the battery and bulb.	Inspect wires and connections from battery to bulb using multimeter. Refer BTA skill set on Connections for identifying and fixing broken wires and bad connections.
10	Does the device use a fiber optic cable and still the light bulb doesn't power on with battery?	There are two types of laryngoscopes: <ul style="list-style-type: none"> • Conventional laryngoscope • Fiber optic laryngoscope If the bulb still doesn't power on then there might be cracks in the fiber optic strands. So the unit might have to be replaced.
11	Inspect for cracks in fiber optic strands and replace the unit if necessary.	If the illumination is not sufficient then inspect for cracks in fiber optic strands.
12	Is the lens free from cracks/defects?	Any defect in the lens obstructs vision of larynx and vocal cords.
13	Replace lens if necessary.	Identify and replace with a suitable lens.

14	Is the blade and handle connected properly?	Improper connection between blade and handle may result in faulty operation of the device.
15	Refer device manual to assemble the parts.	Follow instructions in the device manual to assemble the parts.
16	Perform preventive maintenance on Laryngoscope. Return device to clinical personnel.	Laryngoscope is working properly. Perform preventive maintenance before returning the device to clinical personnel.