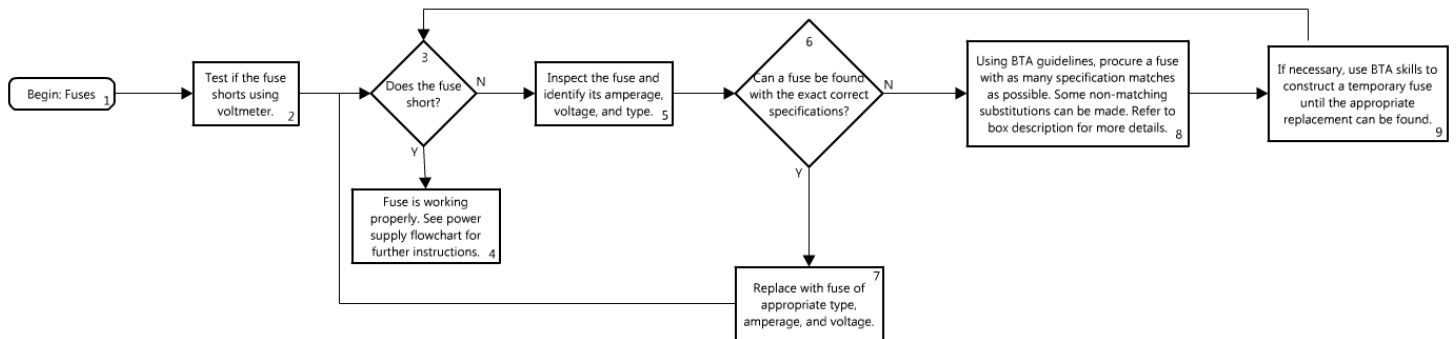


Power Supply (Fuse) Repair and Troubleshooting

Flowchart



Description

#	Text box	Explanation or Comment
1	Begin: Fuses	Begin diagnostic process for a work order on Fuses. Testing and maintenance is advised with any device using a fuse.
2	Test if the fuse shorts using voltmeter.	Use a voltmeter to assess whether or not the fuse shorts (working).
3	Does the fuse short?	If the fuse shorts, the transformer must not be functioning.
4	Fuse is working properly. See power supply flowchart for instructions.	Move on to the next step of the power supply flowchart if device still does not turn on. Always check with clinician before putting a device back into clinical use.
5	Inspect the fuse and identify its amperage, voltage, and type.	Typically the amperage, voltage, and type is printed on the fuse or device that requires it. If not, make an educated guess by comparing with fuses of known specifications. Additionally, use the knowledge of the device to estimate which fuse is best.
6	Can a fuse be found with the exact correct specifications?	Exact specification matches may not be possible or realistic.
7	Replace the fuse of appropriate type, amperage, and voltage.	Simply remove and replace new fuse match.

8	Using BTA guidelines, procure a fuse with as many specification matches as possible. Some non-matching substitutions can be made. Refer to box description for more details.	<p>1. <u>Amperage</u>: Replace with lower amperage - will need to be replaced more frequently. Do not replace with higher amperage.</p> <p>2. <u>Voltage</u>: A higher voltage can replace a lower voltage fuse; a lower voltage fuse cannot replace a higher voltage fuse.</p> <p>3. <u>Type</u>: Fast acting fuse can replace a slow acting fuse (it will need to be replaced more frequently). Slow acting cannot replace fast acting.</p>
9	If necessary, use BTA skills to construct a temporary fuse until the replacement can be found.	Obtain a suitable fuse that matches as many specifications as possible.

Preventive Maintenance

- Best to keep a stock of frequently use fuses in the workshop.