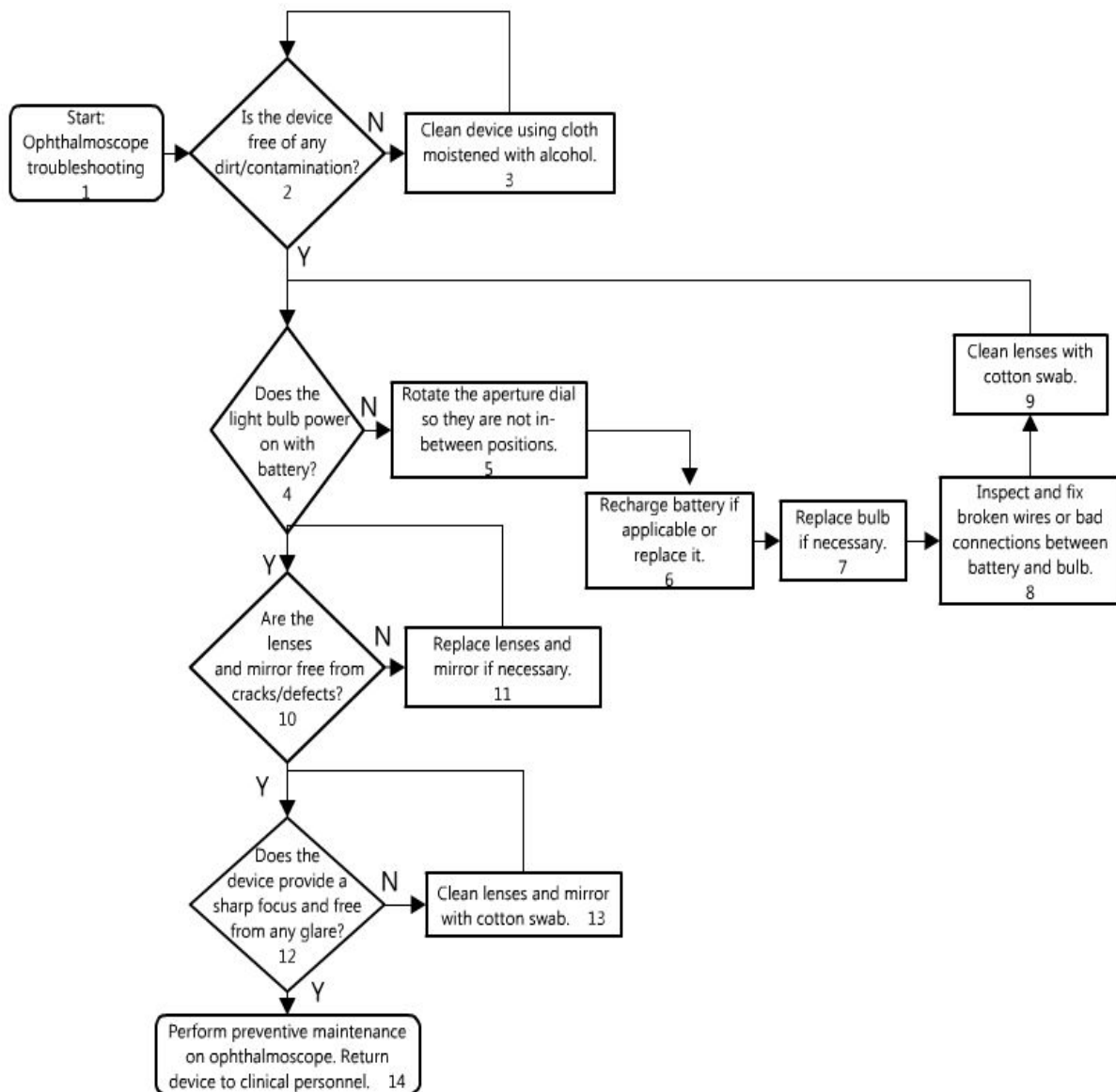


EQUIPMENT

Ophthalmoscope Repair Troubleshooting



Description

#	Text Box	Comments
1	Start: Ophthalmoscope troubleshooting.	Begin diagnostic process for a work order for Ophthalmoscope.
2	Is the device free of any dirt/contamination?	Inspect ophthalmoscope for external cracks, damage and dirt.
3	Clean device using cloth moistened with alcohol.	Examine the device for dirt and contamination. See BTA skills on Mechanical Cleaning.
4	Does the light bulb power on with battery?	Power on the device with battery. Examine whether light bulb gives sufficient illumination.
5	Rotate the aperture dial so they are not in-between positions.	Aperture dial can be in-between positions.
6	Recharge battery if applicable or replace it.	Refer BTA skill set on Batteries to identify and replace damaged batteries.
7	Replace bulb if necessary.	Refer BTA skill set on Lighting/Indicators to replace non-functional light bulbs.
8	Inspect and fix broken wires or bad connections between battery and bulb.	Inspect wires and connections from battery to bulb using multimeter. Refer BTA skill set on Connections for identifying and fixing broken wires and bad connections.
9	Clean lenses with cotton swab.	Clean lenses to remove any dirt and contamination. See BTA skills on Mechanical Cleaning.
10	Are the lenses and mirror free from cracks/defects?	Any defect in the lenses and mirror will not provide a clear view.
11	Replace lenses and mirror if necessary.	Identify and replace with a suitable lens to get a clear view.
12	Does the device provide a sharp focus and free from any glare?	The lenses and mirror are dirty.
13	Clean lenses and mirror with cotton swab.	Clean lenses and mirror to remove any dirt and contamination.
14	Perform preventive maintenance on ophthalmoscope. Return device to clinical personnel.	Ophthalmoscope is working properly. Perform preventive maintenance before returning the device to clinical personnel.

