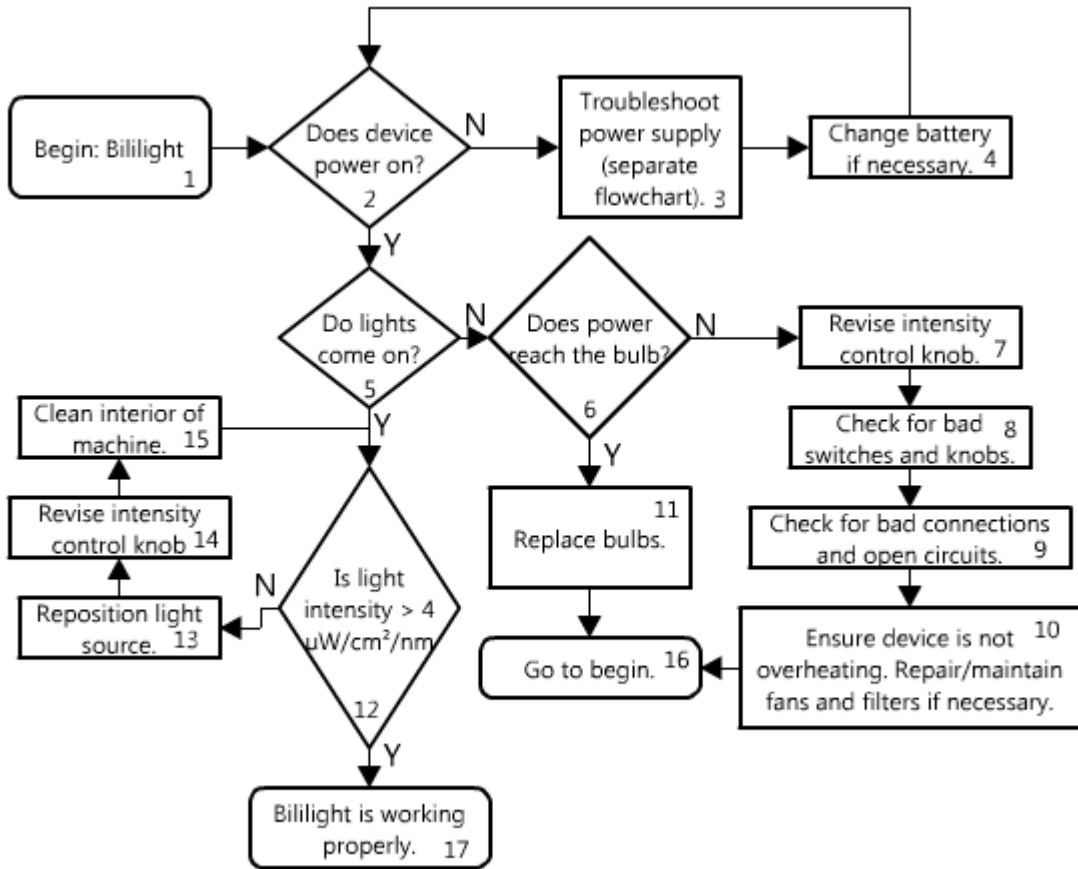


Troubleshooting Flowchart for Bililight



#	Text Box	Explanation or Comment
1	Begin: Bililight	Start the diagnostic process for a work order on a bililight.
2	Does device power on?	Displays, lights, and sounds are all indicators that the device has turned on.
3	Troubleshoot power supply (separate flowchart).	Most bililights have an AC-DC power supply.
4	Change battery if necessary.	Some bililights may have a battery.
5	Do lights come on?	Do the blue lights illuminate when they are switched on?
6	Does power reach bulb?	Does the appropriate voltage reach the input for the bulb?
7	Revise intensity control knob.	Make sure any intensity control knob is turned up to allow the lights to illuminate.
8	Check for bad switches and knobs.	Review switches and potentiometers for faults.
9	Check for bad connections and open circuits	Open circuits, bad connections, and bad wires can prevent the lights from illuminating.

10	Ensure device is not overheating. Repair/maintain fans and filters if necessary.	Some bilights have a safety mechanism that turns the lights off when the device overheats. If this is the case, try allowing the device to cool before attempting to turn the lights on again. If this was the problem, consider ways to improve ventilation.
11	Replace bulbs.	If the appropriate voltage reaches the bulbs and they do not illuminate, the bulbs must be replaced.
12	Is light intensity $> 4\mu\text{W}/\text{cm}^2/\text{nm}$	Measure the light output at patient-level. $4\mu\text{W}/\text{cm}^2/\text{nm}$ is the minimum output for a bilight, though many have outputs higher than this (e.g. $15\mu\text{W}/\text{cm}^2/\text{nm}$)
13	Reposition light source.	If the intensity is too low, the light source may be position too far from the patient.
14	Revise intensity control knob.	The light intensity might be increased by manipulating the intensity control knob.
15	Clean interior of machine.	If the interior of the machine or the bulbs are dirty, it might obstruct the light source or cause overheating of the device.
16	Go to begin.	Start the diagnostic process again to see if the corrective measures have solved the problem.
17	Bililight is working properly.	The light intensity is above the minimum, and the device can be used with patients.